

Figure S1 – Calibration curve SEC ideal mode

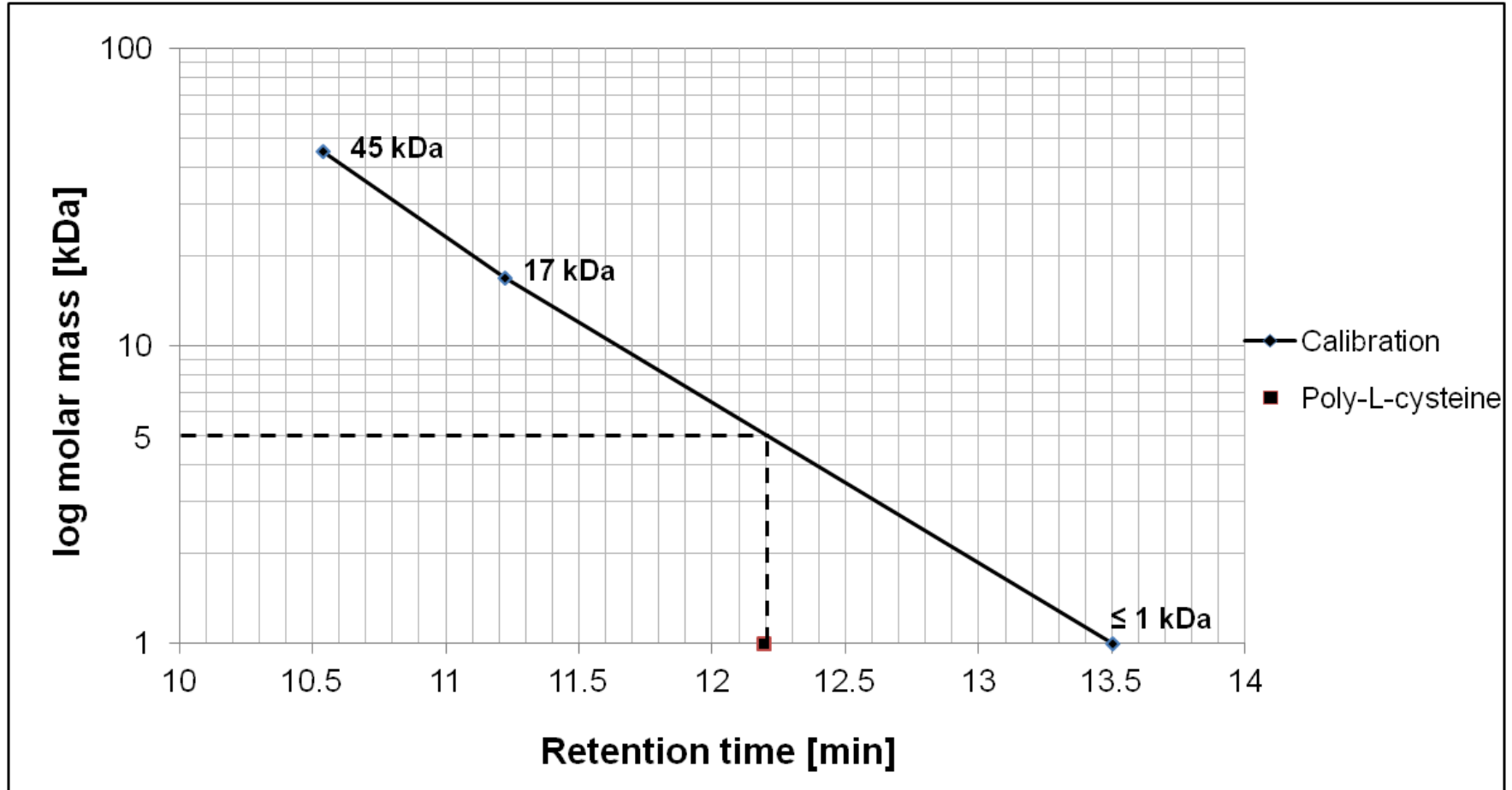


Figure S2 – SEC non ideal mode, day-to-day precision area of myoglobin and ovalbumin on BioSep™ column

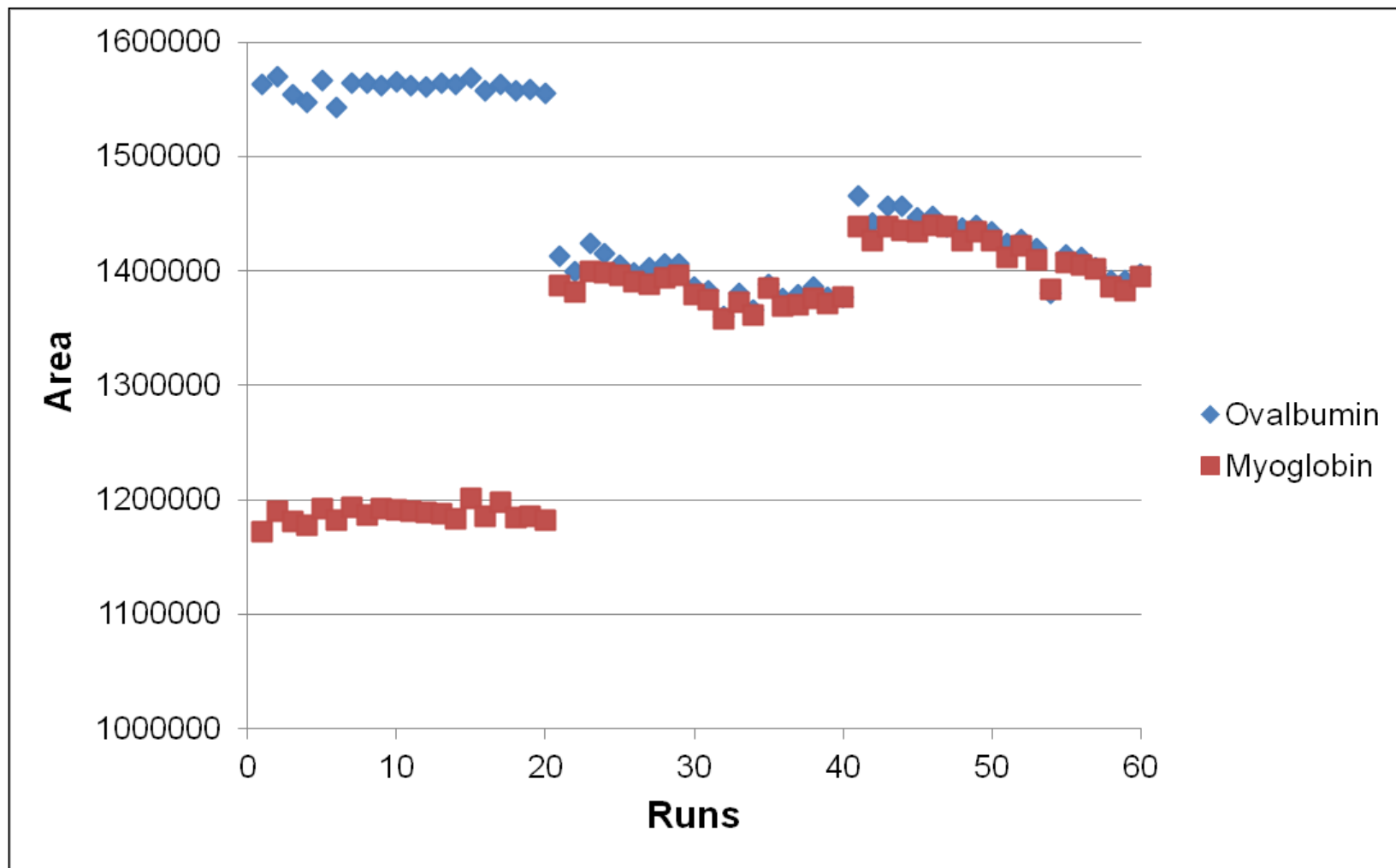


Figure S3 – SEC of IgG antibody; retention times

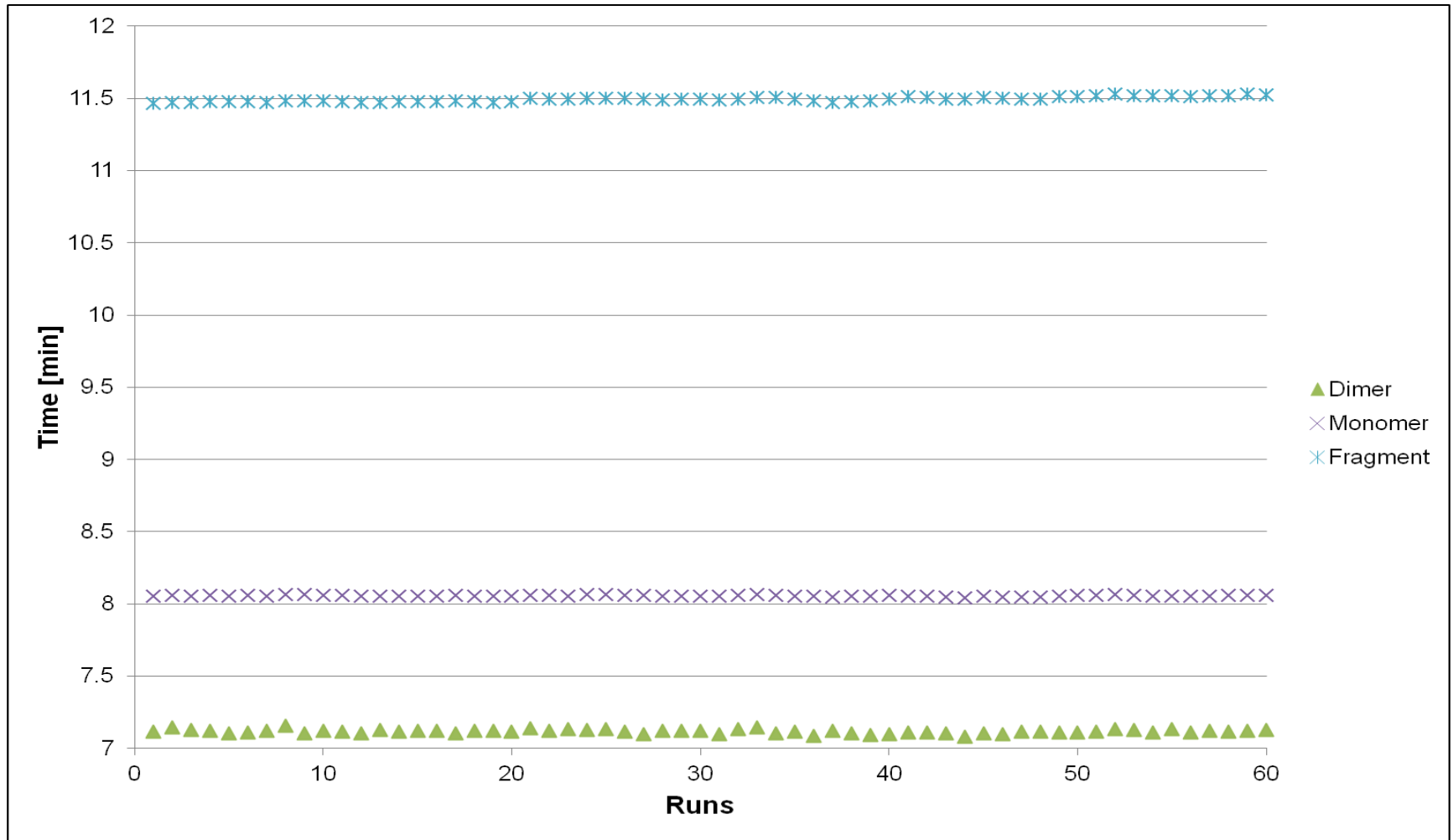


Figure S4 – SEC of IgG antibody; area of dimer

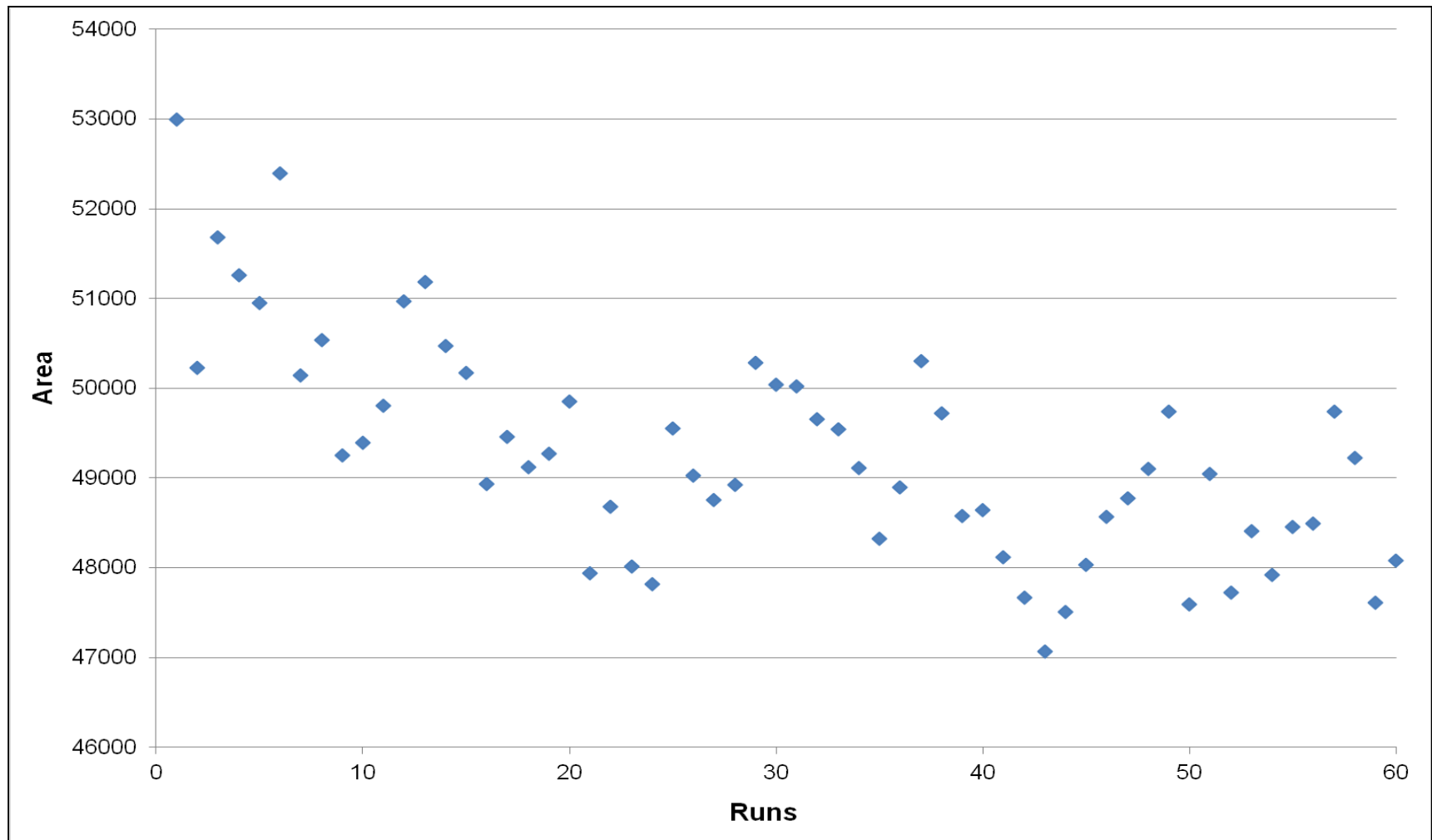


Figure S5 – SEC of IgG antibody; area of monomer

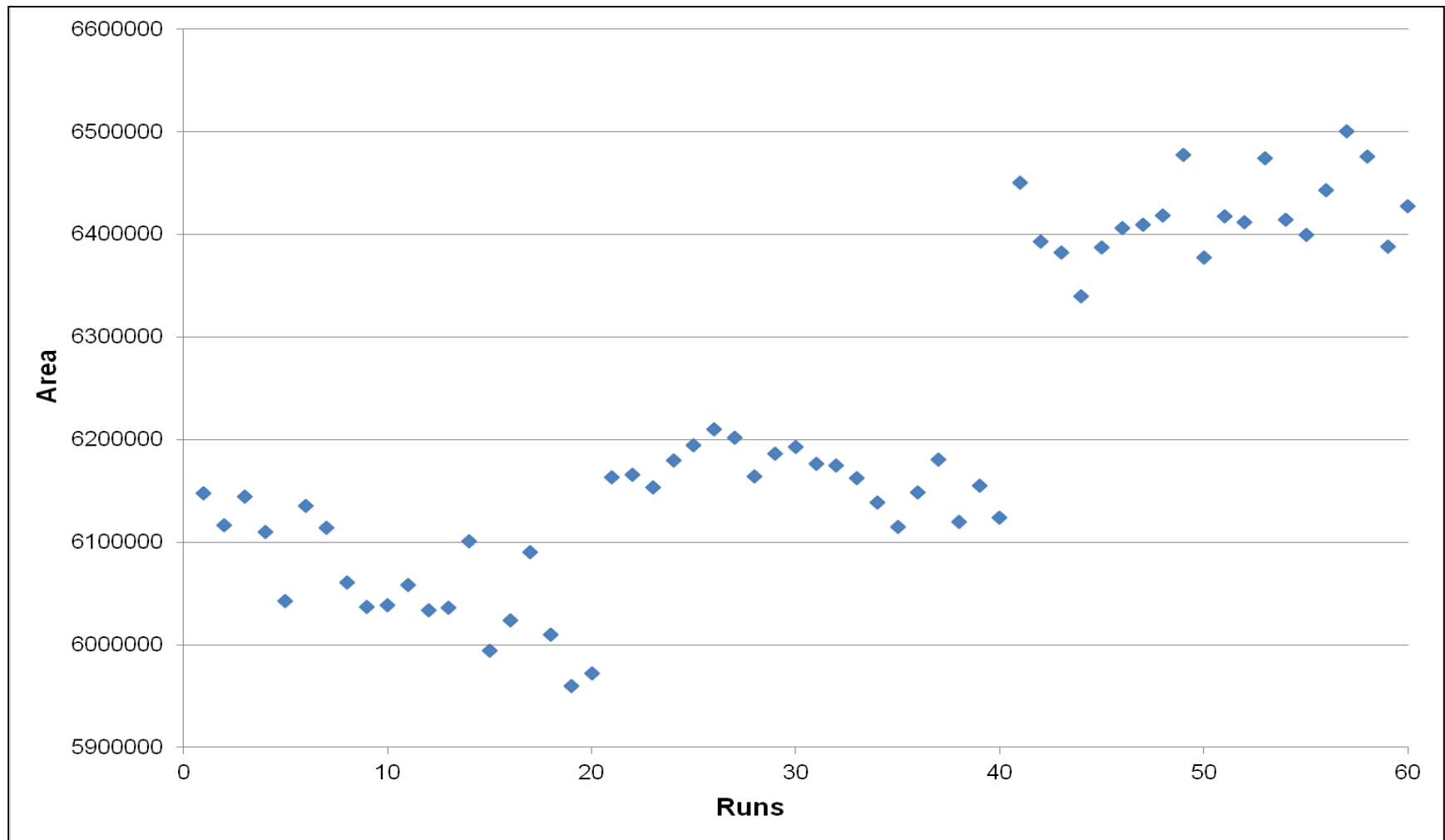


Figure S6 – RP control chart of peak myoglobin 2, day 3

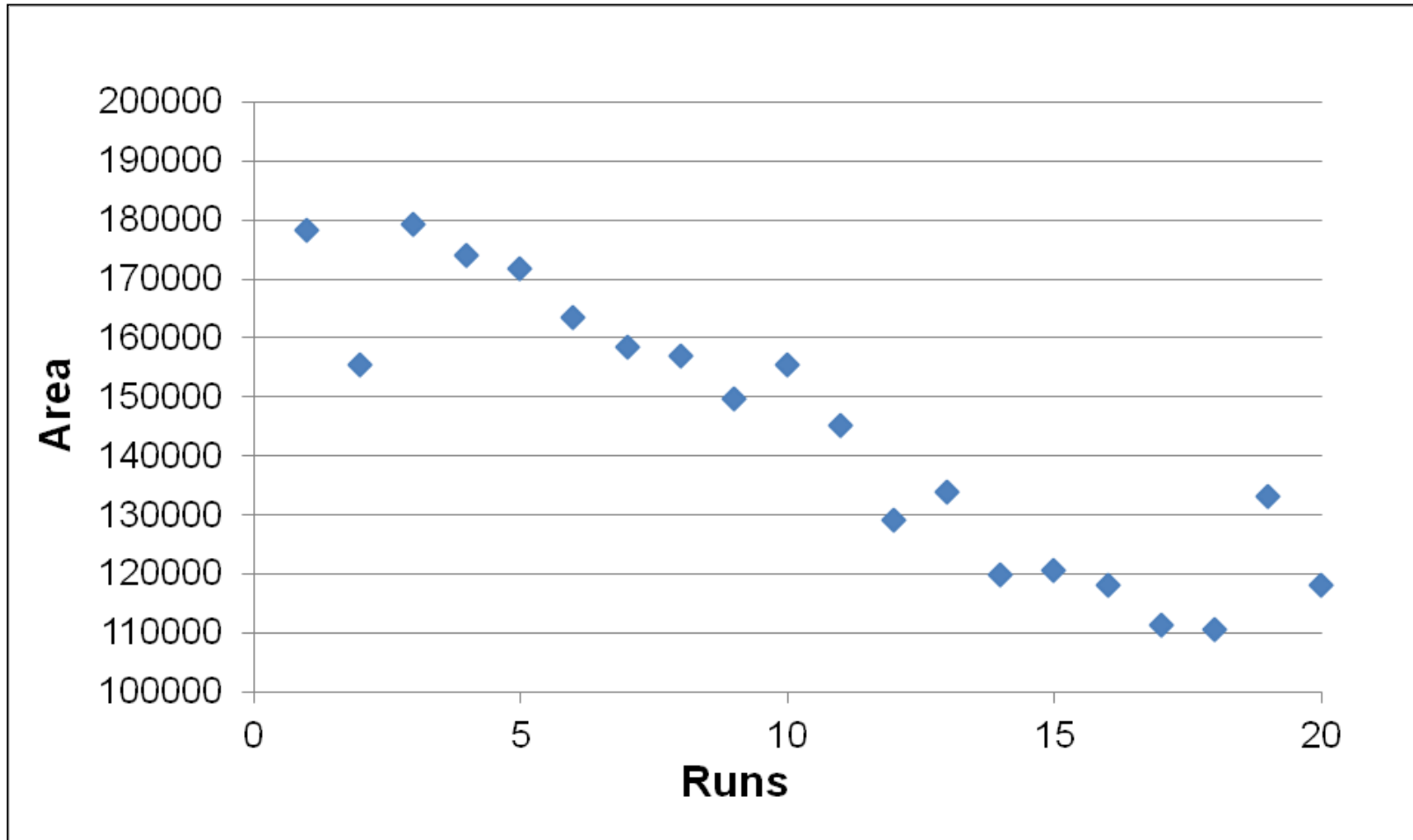


Figure S7 – Separation of myoglobin, ovalbumin and BSA in SAX mode at different wavelength

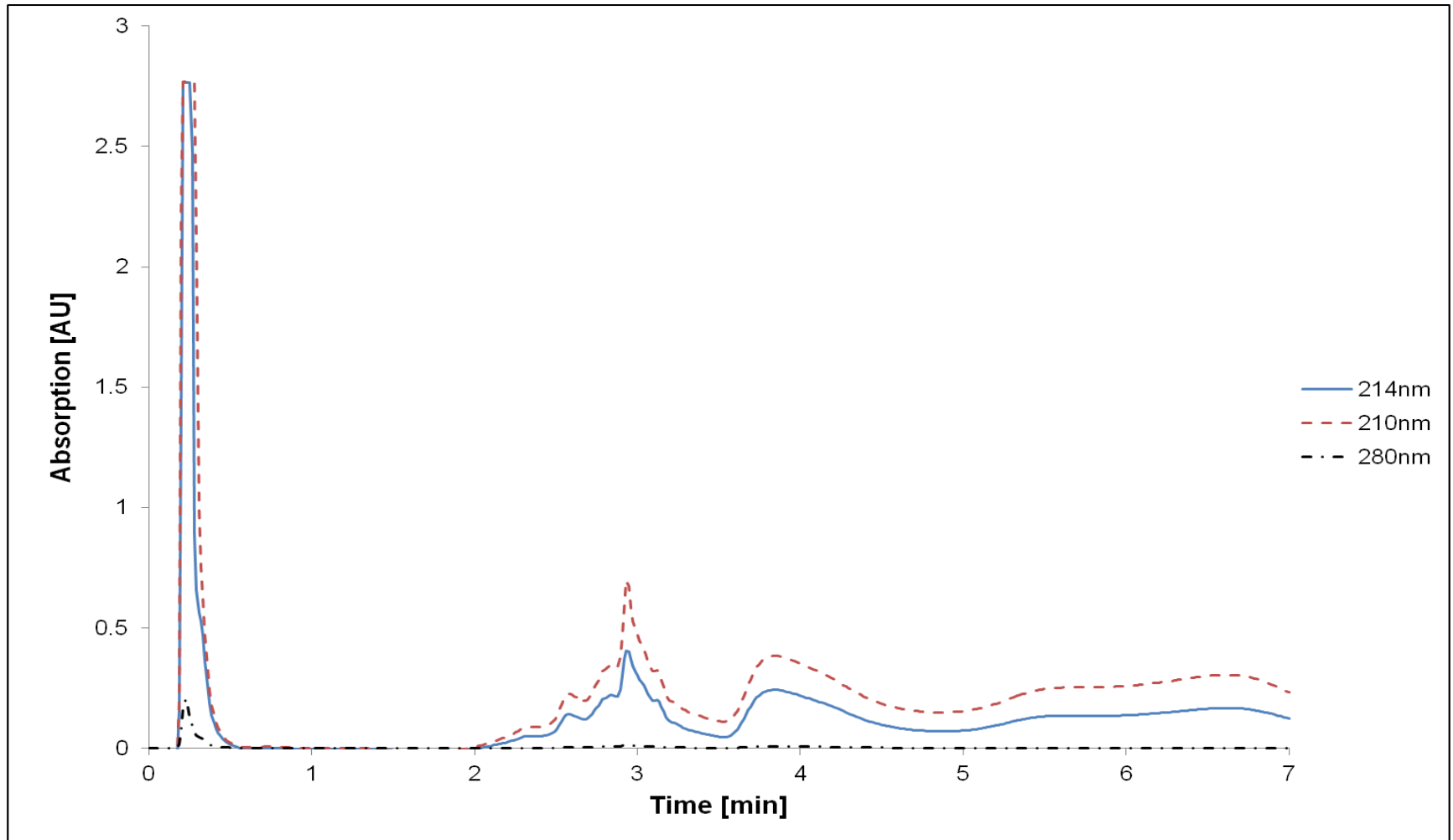


Figure S8 – RP blank injection, chemical noise

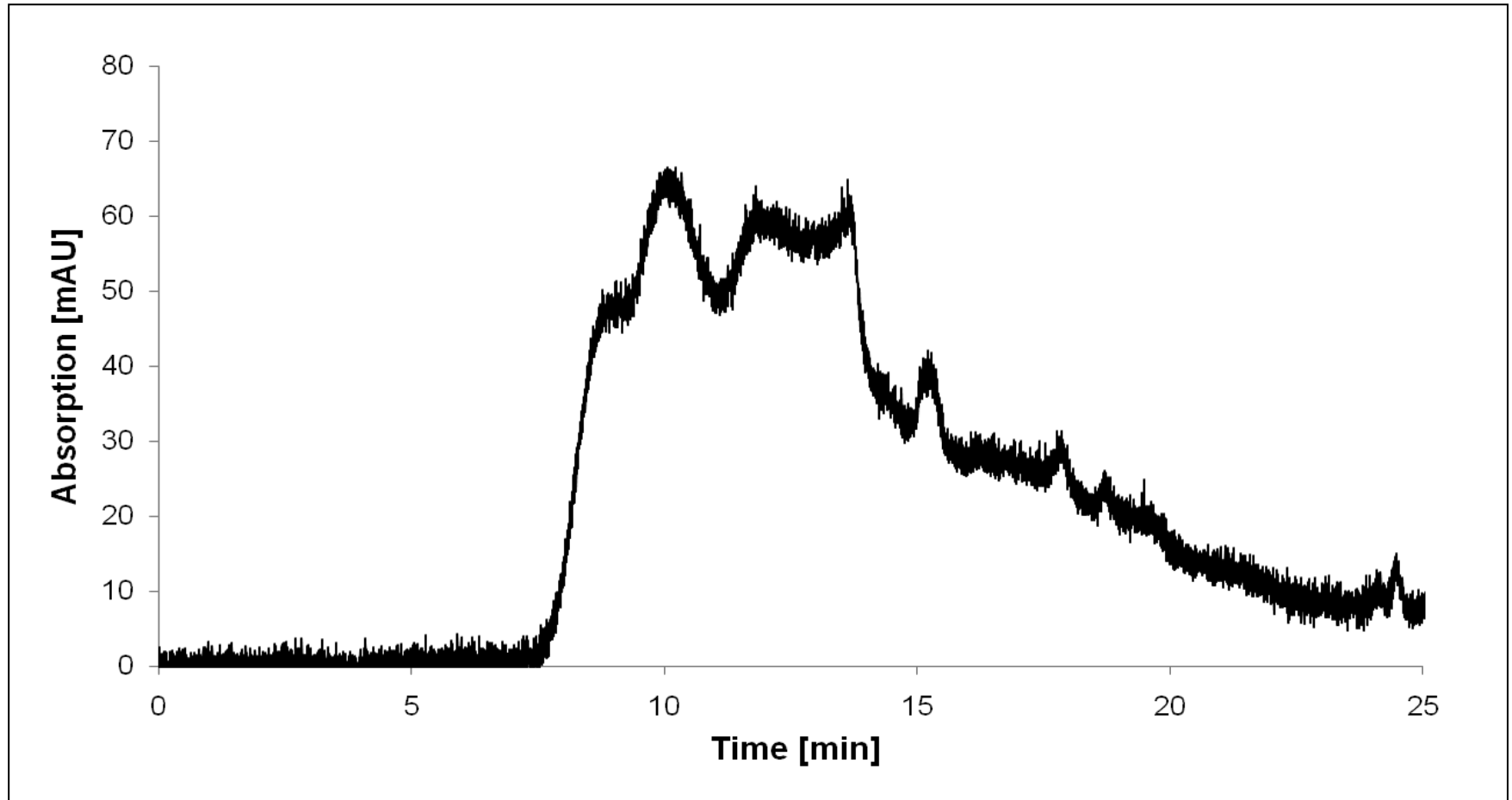


Figure S9 – SAX blank injection

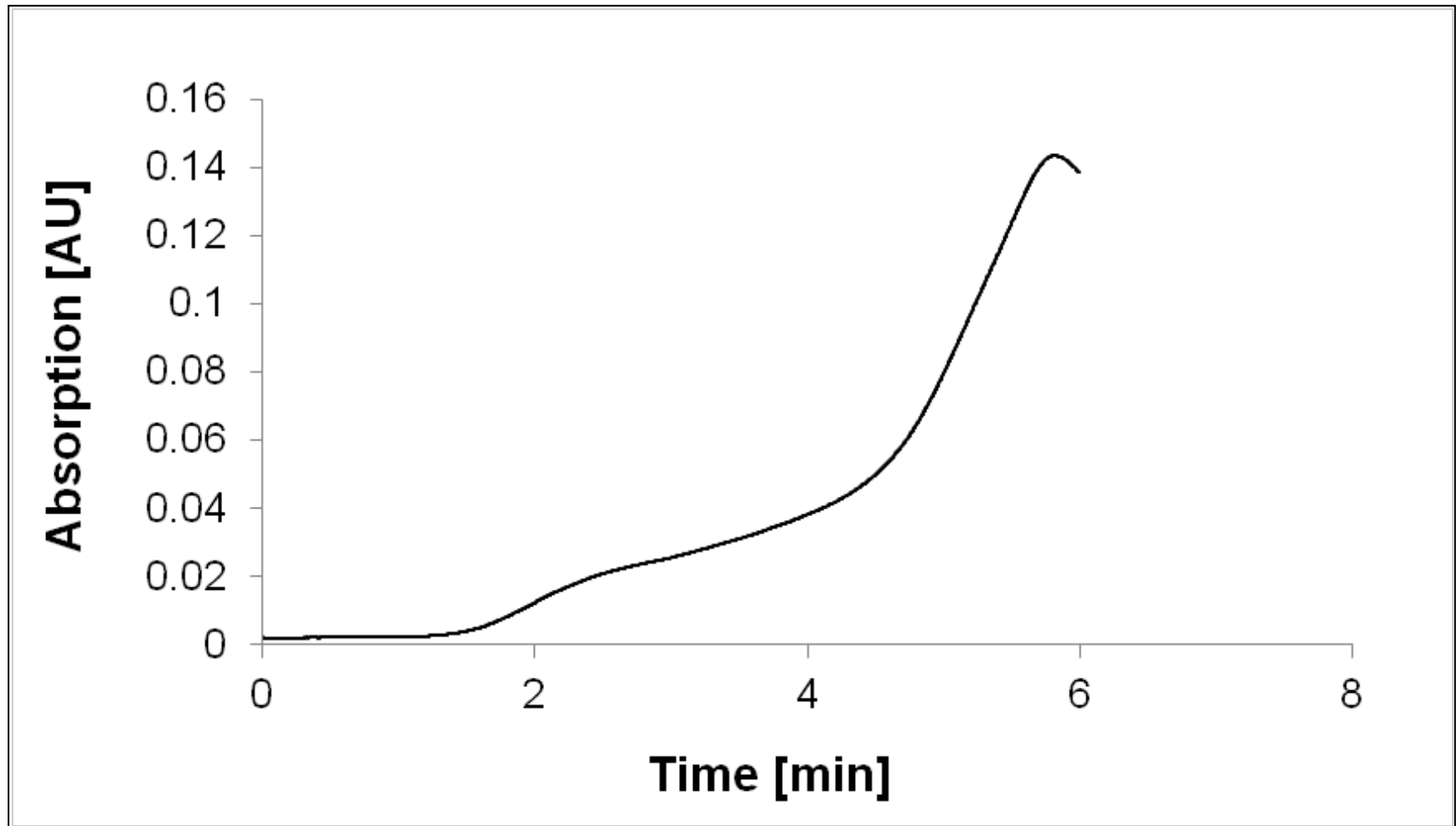


Figure S10 – WCX blank injection

