

Supplementary information for “Analytical Instrument Qualification in Capillary Electrophoresis”

Example results for the different methods presented in Table 2

AA, acetanilide; AC, acceptance criterion; DHBA, 3,5-dihydroxybenzoic acid; NA, nicotinic acid; PC, acetaminophen/paracetamol

Figure S1: Temperature stability

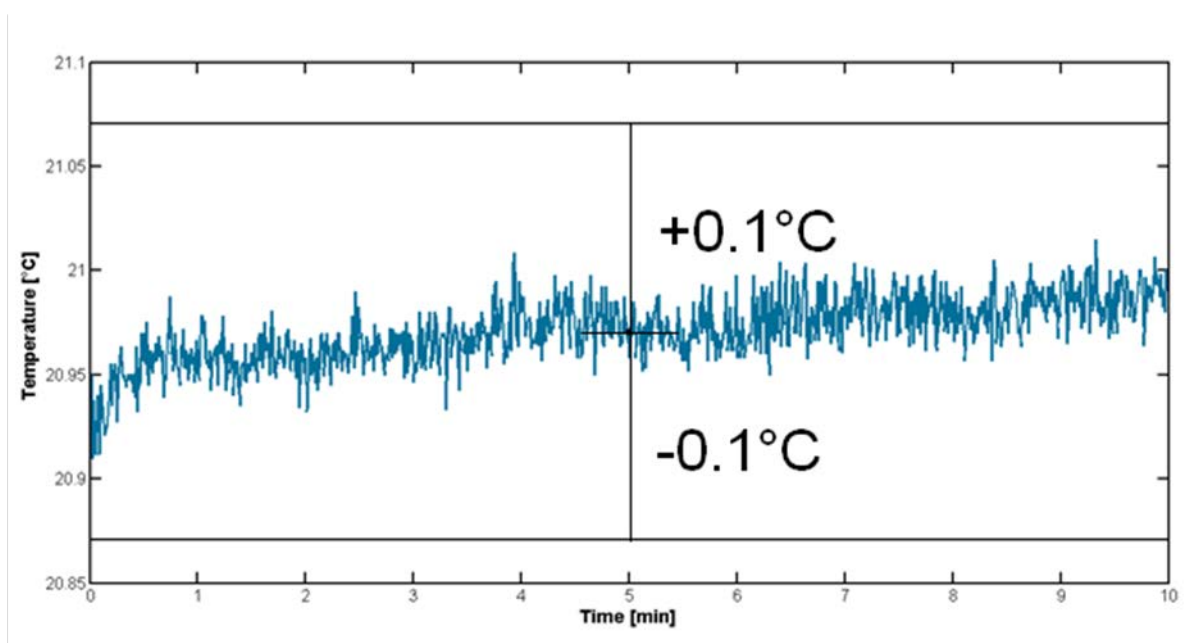


Figure S2: Voltage stability

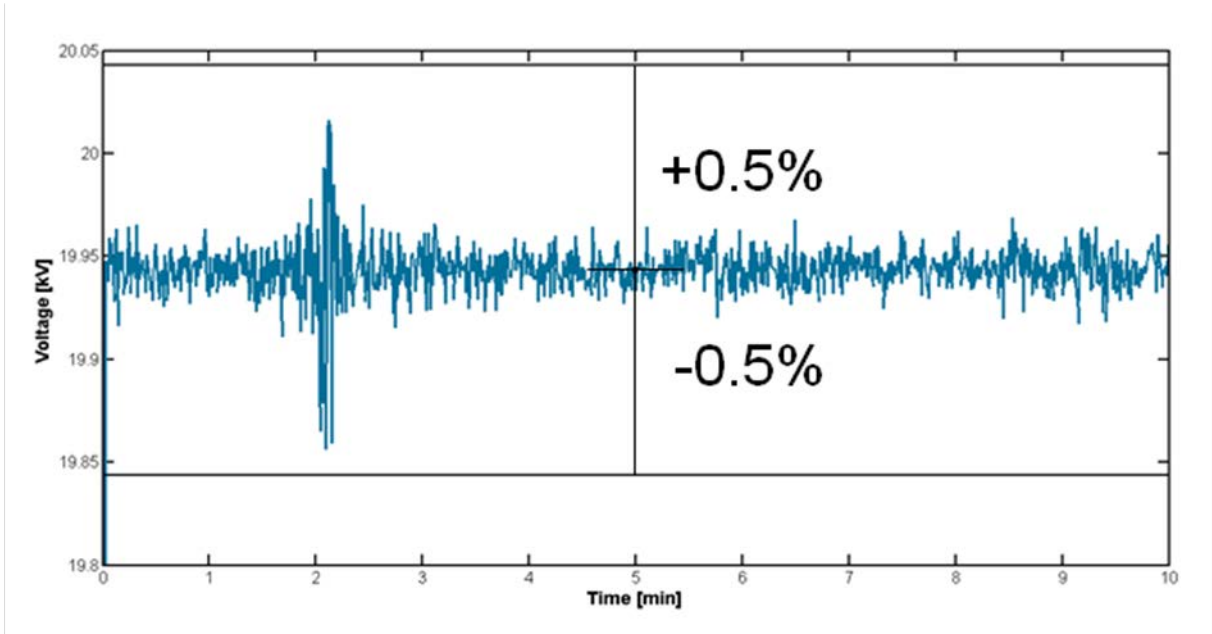


Figure S3: Voltage accuracy

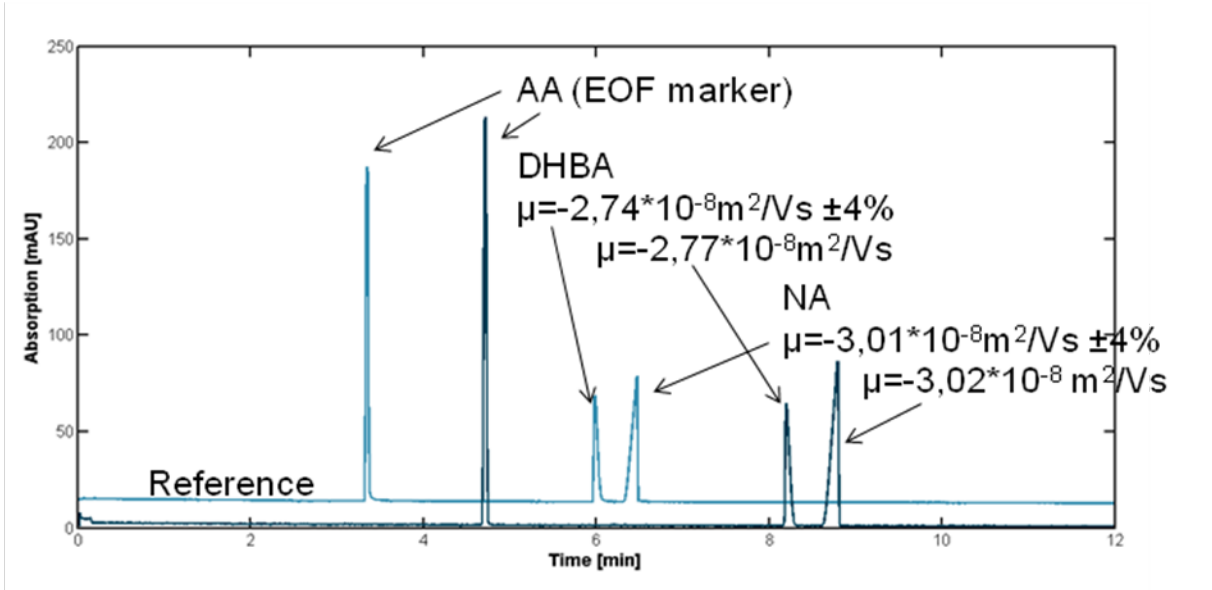


Figure S4: Detector noise

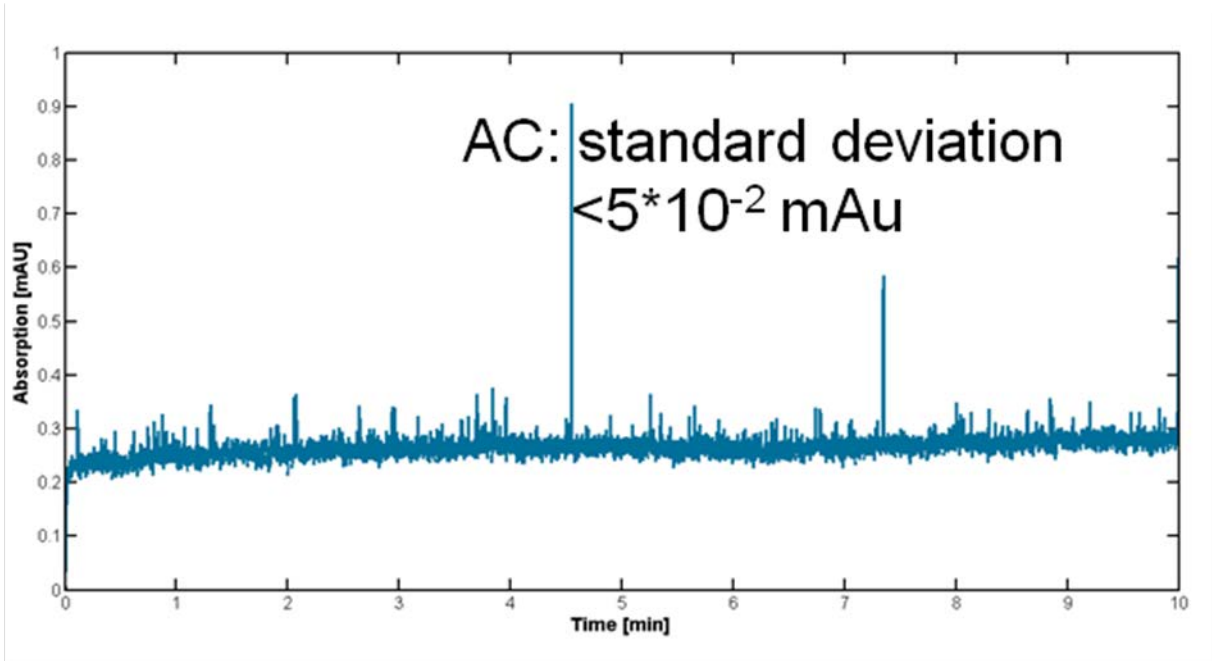


Figure S5: Wavelength accuracy

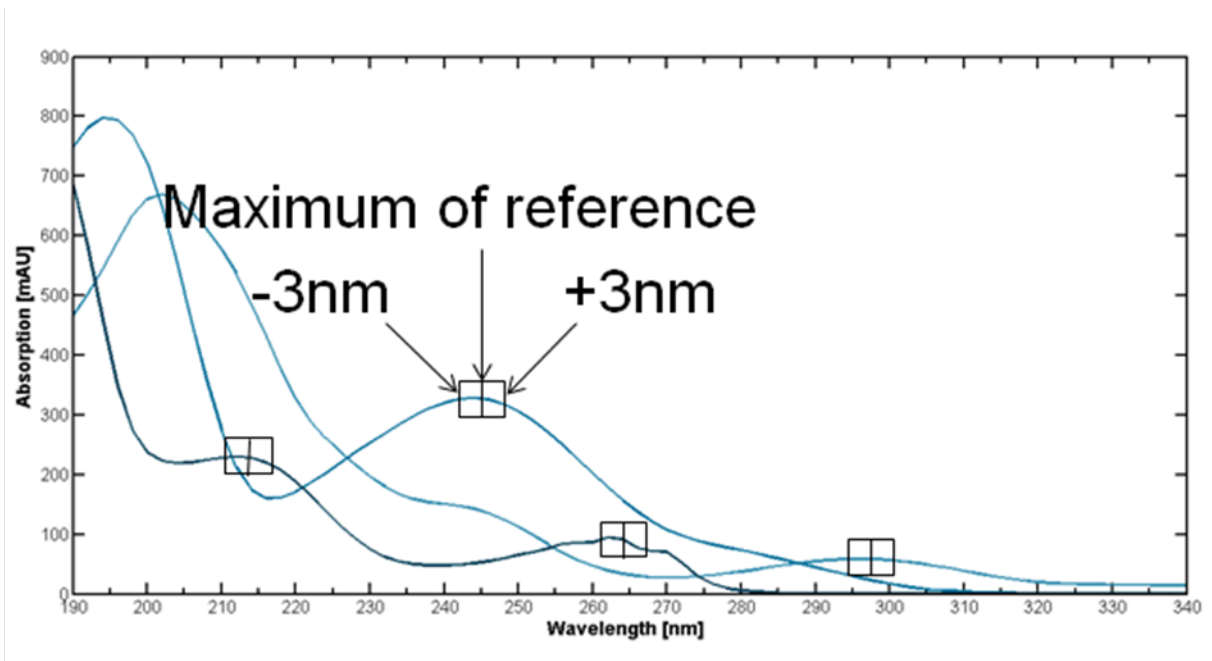


Figure S6: Detector linearity

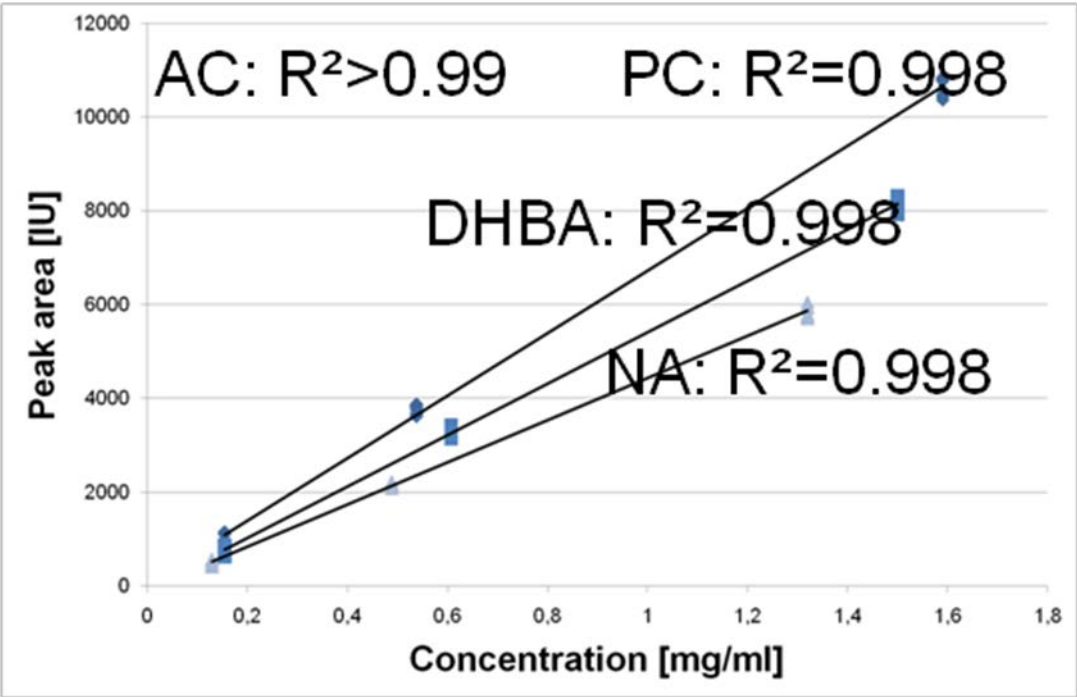


Figure S7. Injection linearity

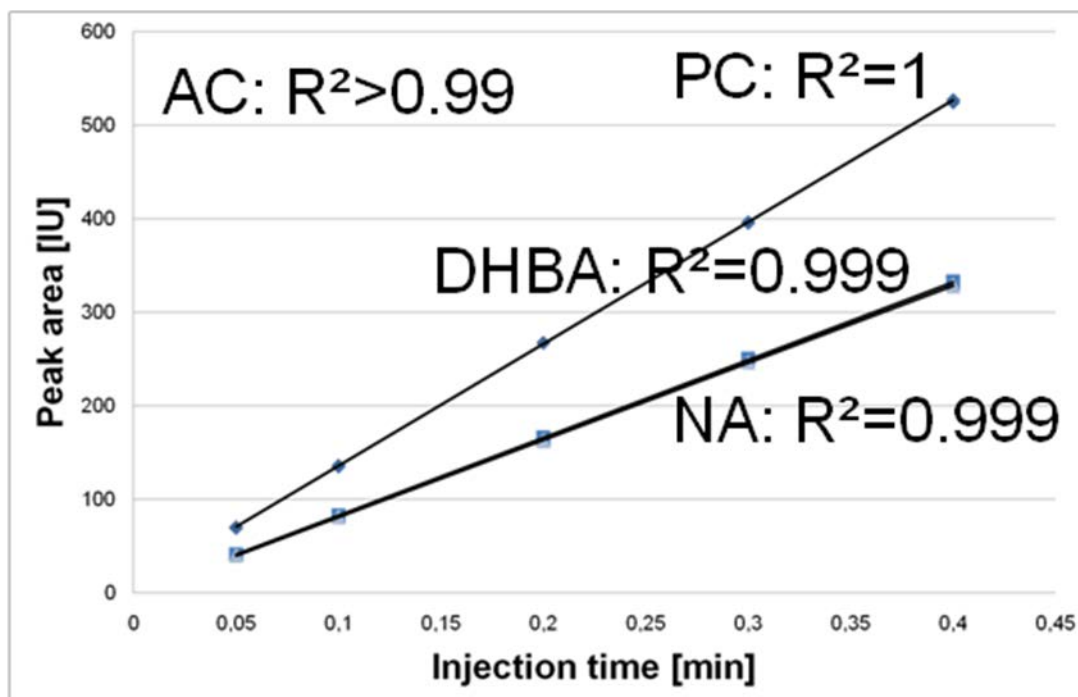


Table S1: Injection precision

| | | Mean | RSD% | AC |
|-----------------------------|-----------------------|------|------|---------------|
| Migration time [min] | Paracetamol | 3.07 | 1.13 | <2% |
| | Dihydroxybenzoic acid | 5.47 | 1.21 | |
| | Nicotinic acid | 5.91 | 1.22 | |
| Peak area [IE] | Paracetamol | 306 | 0.93 | |
| | Dihydroxybenzoic acid | 638 | 0.36 | |
| | Nicotinic acid | 522 | 0.79 | |