



Agenda Book

2019 TPE & TransTiP Science & Technology Training

August 12- August 23, 2019

CHENGDU, CHINA

Organized by the Third Pole Environment (TPE) program
Organized by the IRTG Geo-ecosystems in Transition on the Tibetan Plateau (TransTiP)

Sponsored by Kathmandu-Center for Research and Education CAS-TU

Sponsored by Sino-German Center

Supported by Institute of Tibetan Plateau Research, CAS

Supported by Institute of Mountain Hazards and Environment, CAS

Supported by the China Society on Tibetan Plateau



Travel Information

The organizer will arrange Airport Pickup for participants. We will arrange 1-2 staff waiting at the arrival gate of Terminal 1 and Terminal 2 in Chengdu airport on **10th and 11th August.**

In case you cannot find our staff, please take a taxi to Xiangyang Hotel (Around 40 RMB).



Hotel info in Chinese.

我要去 (I want to go to) : 向阳大厦宾馆
酒店地址 (Hotel address): 成都市武侯区二环南路 23 号
酒店联系电话 (Hotel Phone): (86)028-85239999

Hotel Card as below:



Please drive me to
请送我到



No.23 2nd Ring Road, 2nd South Section, Chengdu
中国四川省成都市二环路南二段23号
Tel/电话+86 28 85239999(总机) Fax/传真+86 28 85306518
Http: //www.cdxy.com E-mail: res@fulohotel.com

Meeting Information

Hotel Accommodation

Xiangyang Hotel

Address: No.23, Second Ring Road South Section, Wuhou District, Chengdu

Post Code: 610041

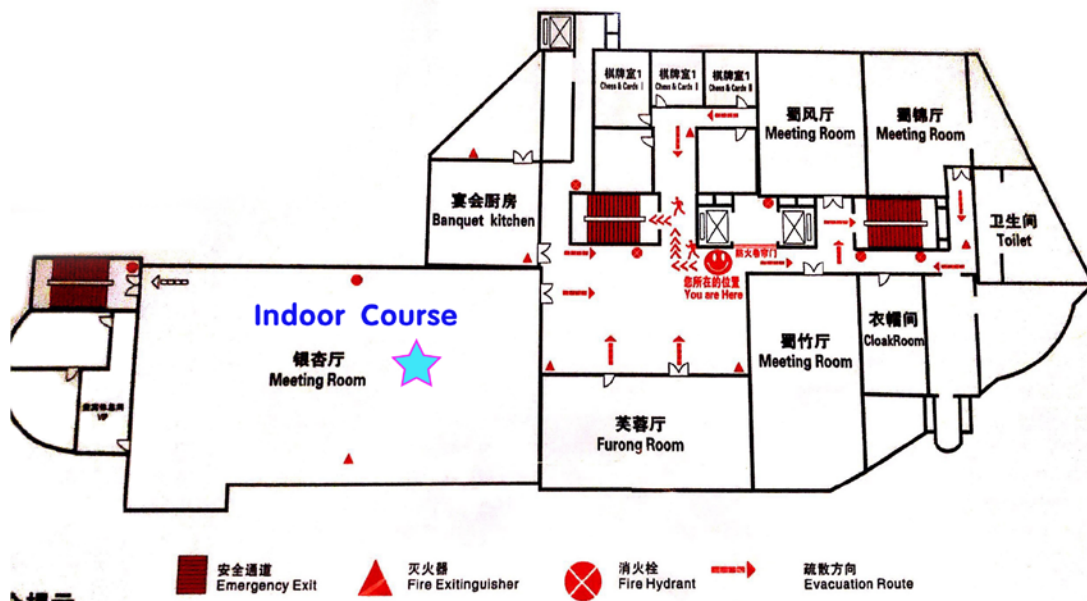
Tel: (86)028-85239999

A block of rooms has been reserved for the training participants at the Xiangyang Hotel. Your room charge for accommodation from 11 August (day of arrival) to 24 August 2019 (day of departure) will be billed directly to the Organizers. However, individuals will be responsible for any incidental charges, such as phone calls, mini-bar etc.

Costs for meals as indicated in the Course Duration (including the field trip) will also be covered by the Organizers for all participants.

Location of the Course

Indoor course will be arranged at Meeting Room (Yinxing Ting) on the fifth floor of the Hotel. Following is a map of fifth Floor:



Meals Sites

Breakfast, lunch and dinner during lectures will be offered by the hotel. At the Four Season Chinese Restaurant on the second floor. **The hotel restaurant will provide vegetarian food.**

NOTICE

- 1、Pay attention to your personal and financial safety. Chengdu is a safe city with good public order, nevertheless, please avoid going out alone at night. In the event of an emergency, please call the Alarm Reporting Telephone “110”, and/or contact with any member of organizing committee.
- 2、Please attend each training lesson on time. Your institution will get a feedback of your punctuality and attendance during the training from the organizer.
- 3、Please observe the hotel policies in order to make your stay safe and comfortable
- 4、Costs for Accommodation and Meals during the Course (including the field trip) will be covered by organizer. Apart from these expenses, individuals will be responsible for any incidental charges.

REMINDER

The Gongga alpine ecosystem observation and experiment station, or Gongga Mountain Station in abbreviation, is located on the east slope of Mt. Gongga and the eastern edge of the Tibetan Plateau. It consists of Moxi base station (102° 72' E 29° 92' N) at 1640 m a.s.l., a subalpine field observation station (102° 02' E, 29° 32' N) at 3000 m a.s.l., and Chengdu Analysis Testing Center. Due to the particular variance of geographic and geomorphic conditions, Mt. Gongga exists dramatic differentiation in climate, biology, and environment. The unique landscapes include Subtropical farmland, mountain primeval forest, and marine glacier. The famous Hailuoguo Glacier covers an area of 25 km², with the tail end of the glacier tongue stretching down to the forest area at 2900m, and the great ice waterfall in the middle of the glacier, which is up to 1080m, is spectacular.

The annual temperature of Hailuoguo is between 13 °C (1600m) and 4 °C (3000m) on average. Summer and autumn are the rainy seasons, and the annual precipitation varies between 1000 mm (1600m) and 1900 mm (3000m). Therefore, it is strongly recommended to prepare **umbrellas, raincoats, warm clothes and sports shoes** by yourself. Besides, please prepare a small tank of oxygen in advance, if it is necessary.

It is raining often in Chengdu in August, and the air humidity is high. Please prepare the necessary rain gear and extra clothes.

Contact

Ms. PING Fan

Tel. 86-10-84097124

Mobile phone: 86-0-13581914794

Email: pingfan@itpcas.ac.cn

Institute of Tibetan Plateau Research, Chinese Academy of Sciences

Mr. LIU Xiaobo

Mobile phone: 86-0-13811855597

Email: xbliu@itpcas.ac.cn

Institute of Tibetan Plateau Research, Chinese Academy of Sciences

2019-08-11 Sunday		
The Whole Day	Arrival: Registration	
2019-08-12 Monday		
8:30 – 9:30	Opening Ceromony	
	Welcome speech	
	Introduction of the Institute of Tibetan Plateau Research, CAS	MA Yaoming
	Introduction of the Third Pole Environment Programme	ZHANG Fan
	Introduction of the TransTiP program	Antje Schwalb
	Group Photo	
10:00 – 11:45	The Progress on the Study of Land - Atmospheric Interaction over Heterogeneous Landscapes: From the Tibetan Plateau to the Third Pole and Pan-Third Pole	MA Yaoming
12:30	Lunch	
14:00 – 15:45	Atmospheric Deposition of Trace Metals in Montanne Soil	WU Yanhong
16:15 – 18:00	Visit the Institute of Mountain Hazards and Environment (IMHE), CAS	WANG Genxu
18:30	Ice-breaking Dinner and self-introduction	
2019-08-13 Tuesday		
8:30 – 10:15	The Basic Survey and Modern Process Observation of the Lakes on the Tibetan	ZHU Liping
10:45 – 12:00	Air Pollution Monitoring - Passive Samplers an Appropriate choice for Developing	Mam Rejina Maskey
12:30	Lunch	
14:00 – 15:45	Ground Surface Evaporation in TPE Region: Observation and Modelling	ZHANG Yinsheng
16:15 – 18:00	Carbon Cycle Modeling	Markus Müller
18:30	Dinner	
2019-08-14 Wednesday		
8:30 – 12:30	Human Dimensions of Climate Change	Antje Schwalb, Ciren Yangzong
12:30	Lunch	
14:00 – 18:00	The Alpine Anthropocene: How to Detect the Human Footprint in High Altitude	Georg Mieke
18:30	Dinner	
2019-08-15 Thursday		
8:30 – 12:30	Diatoms, Climate, and Landscapes in the Tropical Andes	Sheri Fritz
12:30	Lunch	
14:00 – 15:45	Diatom-based Paleolimnological Studies in Western China	Patrick Rioual
16:15 – 18:00	Lithospheric Deformation, Lineament Analysis and Geohazard Assessment along the Silk Route, North Pakistan	Ishtiaq Ahmed Khan Jadoon
18:30	Dinner	

2019-08-16 Friday		
8:30 – 10:15	Tibetan Plateau Uplift and Exceptional Topography of Gongga Shan	Kristen Cook
10:45 – 12:00	Understanding the Integrated Hydrological Regimes over the Third Pole	ZHANG Fan
12:30	Lunch	
14:00 – 18:00	Visit in Chengdu	
18:30	Dinner	
2019-08-17 Saturday		
8:30 – 10:15	Measurement of Earth System Science Research Station	Leif Knut Ingmar Klemedtsson
10:45 – 12:00	The CoupModel as a Tool to Understand How Ecosystems Respond to Climate and Land Use Changes	Per Erik Axel Jansson
12:30	Lunch	
14:00 – 15:45	Greenhouse Gas Flux Related to Land Use and Management	Charis Kasimir
16:15 – 18:00	Microbe in the Third Pole Glacier	LIU Yongqin
18:30	Dinner	
2019-08-18 Sunday		
8:30 – 10:15	If Something is Mathematically Right, It May Not Be Computationally Right	YE Ming
10:45 – 12:00	Fundamentals of Risk Analysis and Its Applications	WANG Xiaoming
12:30	Lunch	
14:00 – 15:45	Digital Elevation Models for Glaciological and Geomorphological Applications	Tobias Bolch
16:15 – 18:00	Closing Ceremony	ZHANG Fan, Antje Schwalb
18:30	Dinner	
2019-08-19 Monday		
The Whole Day	Leave for Gongga Mountain by bus	
2019-08-20 Tuesday		
Morning	Visit Gongga Mountain Alpine Ecosystem Observation and Experiment Station	RAN Fei, ZENG Chen
Afternoon	Field practice at Hai Luo Gou glaciers	RAN Fei, Cook Kristen
2019-08-21 Wednesday		
The Whole Day	Leave for Dujiangyan by bus	
2019-08-22 Thursday		
The Whole Day	Visit Dujiangyan Water Conservancy Engineering System	
2019-08-23 Friday		
The Whole Day	Back to Chengdu by bus	
2019-08-24 Saturday		
The Whole Day	Departure	