

## Fit4TU Self Assessment tool for prospective students - compare your expectations of CSE with the actual programme!

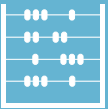
- ✓ Find out if your current skill set and knowlegde are a good fit for CSE!
- ✓ Get more in-depth information about CSE!
- ✓ Assess yourself and gain a better understanding of your strenghts!
- ✓ Use the personalized feedback to decide if CSE is the right fir for you!

CSE is great because...

...it is a perfect mixture of Engineering Sciences (Mechanical, Electrical, Civil), Computer Sciences and Mathematics.

...it offers a huge variety of courses.

...of the nice atmosphere in between students, seniors and stuff.



### Contact Information

Technische Universität Braunschweig  
CSE  
Beethovenstraße 51  
38106 Braunschweig

Programme Coordinator  
Annika Kleinwächter  
cse@tu-braunschweig.de  
Phone: +49-531-391-2241

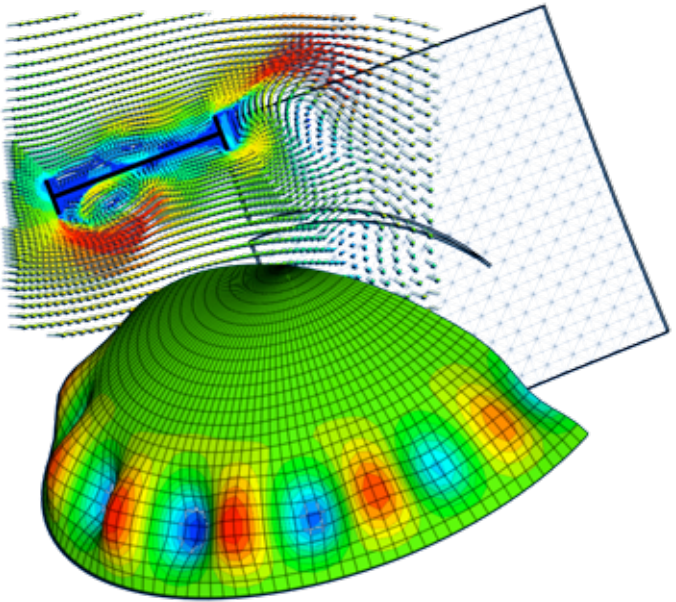
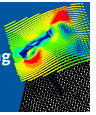
[www.tu-braunschweig.de/cse](http://www.tu-braunschweig.de/cse)



Technische  
Universität  
Braunschweig



Computational  
Sciences in Engineering



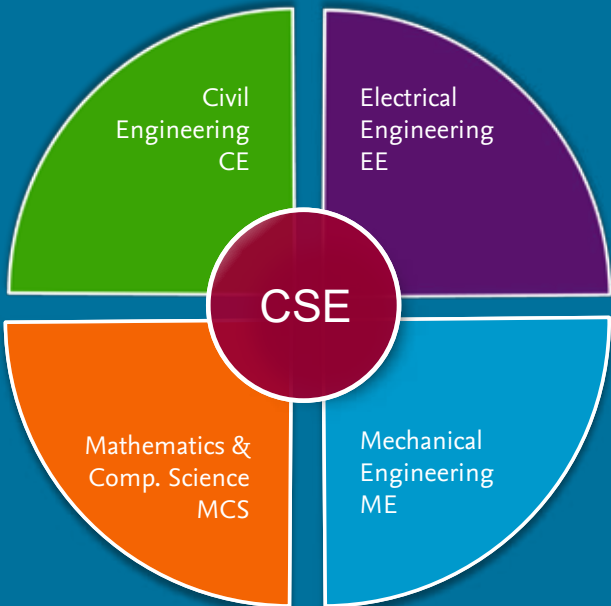
Computational Science  
in Engineering (M.Sc.)

International |  
Interdisciplinary |  
Bilingual

## What is Computational Sciences in Engineering?

- Interdisciplinary, research oriented, international, and bilingual Master's degree programme
- Combination of engineering sciences, mathematics and applied computer sciences
- Solving subject-specific problems regarding physical modelling, mathematical description as well as numerical simulation
- Performing and evaluating complex numerical analyses of engineering processes

## Directions of Study



## Possible Careers



„How to make mathematics, computational sciences and different disciplines work with each other? As a CSE engineer you will develop a perspective of solving and problem numerically, looking at applications in engineering, medicine, chemistry and physics.“



## Quick Facts

- Degree: Master of Science (M.Sc.)
  - Duration: 4 semester
  - Start: Winter semester
  - Language of instruction: 50 % English, 50 % German
- Application Periods  
Jan 1 - March 15 (Non EU)  
Jan 1 - Jul 15 (EU citizens)