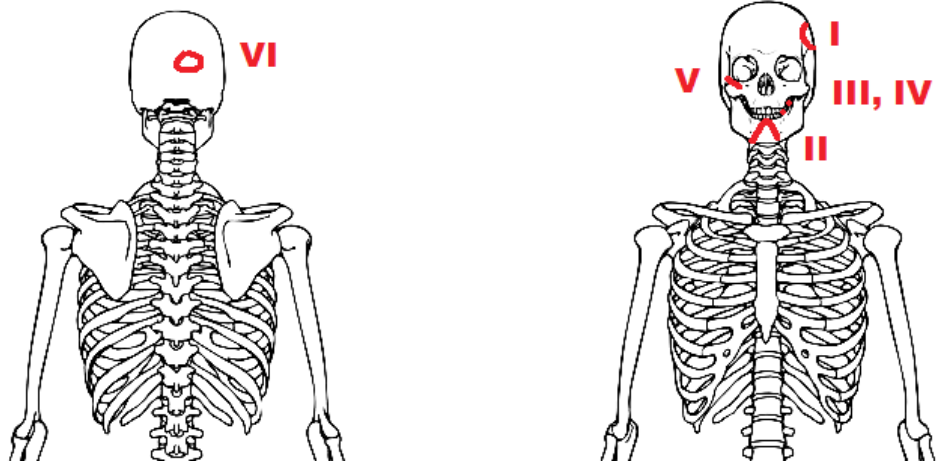
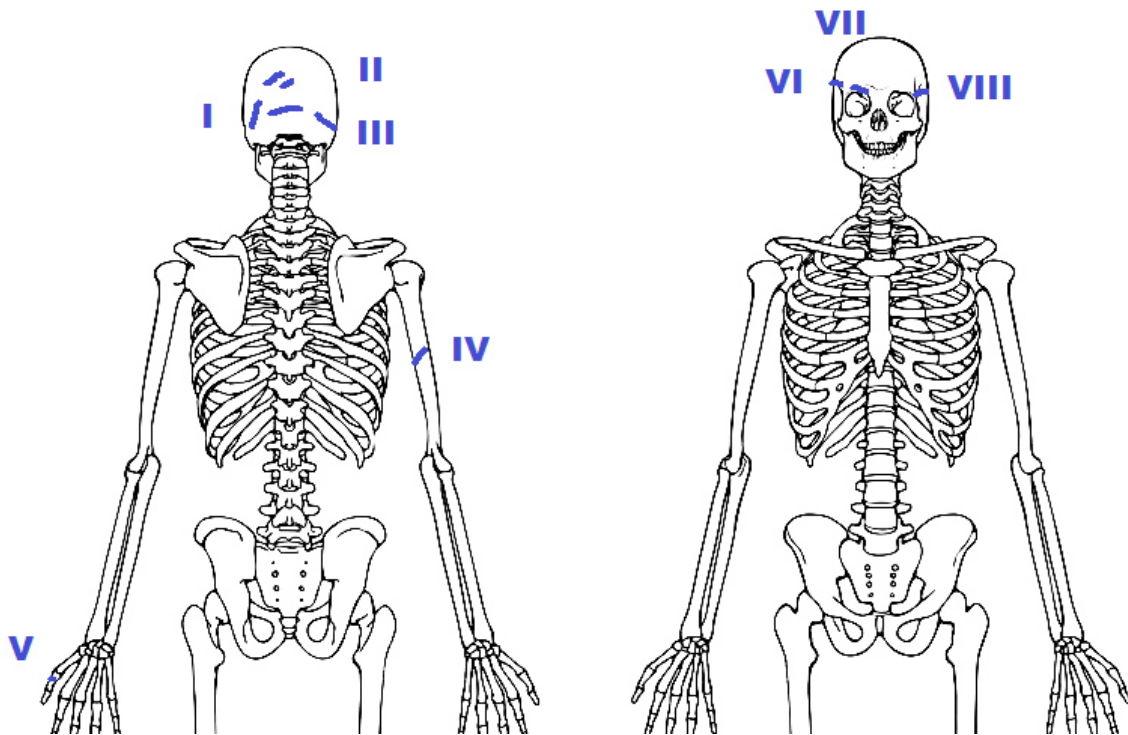


## Frakturen



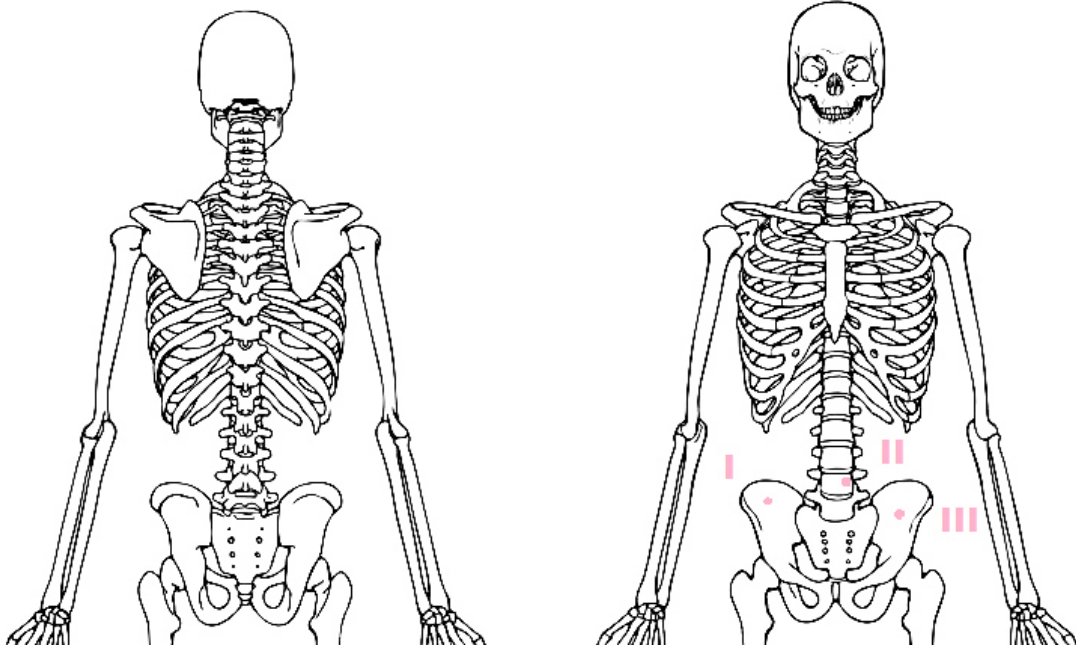
|     |                                |
|-----|--------------------------------|
| I   | 330 - stumpfe Gewalteinwirkung |
| II  | 331 - Berstungsfraktur         |
| III | 331 - ausgeschlagener Zahn     |
| IV  | 329 - ausgeschlagener Zahn     |
| V   | 329 - stumpfe Fraktur          |
| VI  | 335 - stumpfe Fraktur          |

## Verwundungen Schnitt



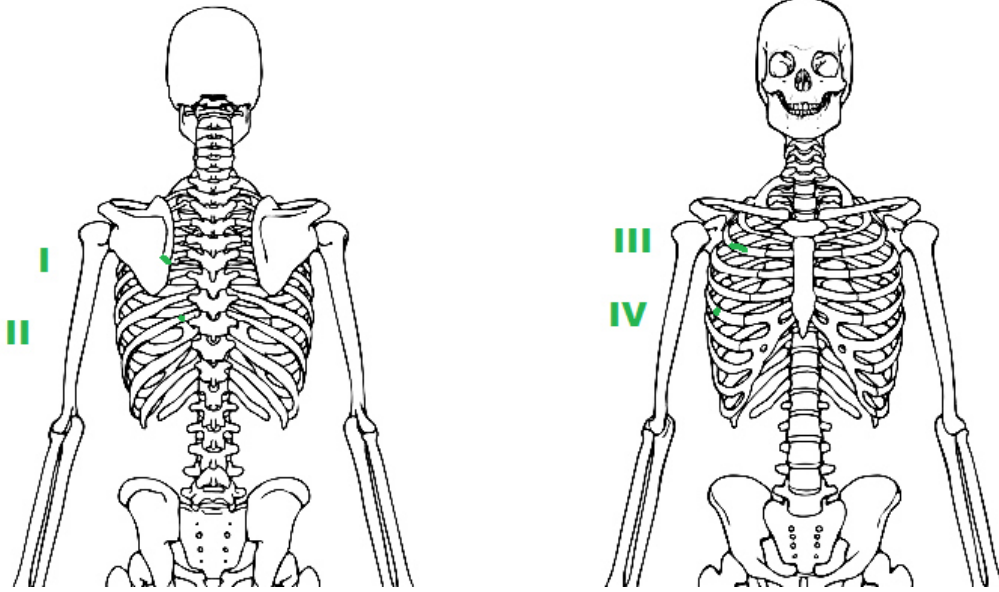
|             |                      |
|-------------|----------------------|
| <b>I</b>    | <b>336 - Hieb</b>    |
| <b>II</b>   | <b>329 - 3 Hiebe</b> |
| <b>III</b>  | <b>331 - Hieb</b>    |
| <b>IV</b>   | <b>336 - Hieb</b>    |
| <b>V</b>    | <b>336 - Hieb</b>    |
| <b>VI</b>   | <b>336 - Hieb</b>    |
| <b>VII</b>  | <b>332 - Hieb</b>    |
| <b>VIII</b> | <b>334 - Hieb</b>    |

## Verwundungen Schuss



|     |                   |
|-----|-------------------|
| I   | 334 - Steckschuss |
| II  | 332 - Steckschuss |
| III | 334 - Steckschuss |

## Verwendungen Stich



|     |             |
|-----|-------------|
| I   | 334 - Stich |
| II  | 336 - Stich |
| III | 335 - Stich |
| IV  | 333 - Stich |

